

Small Purse

Pattern & Instructions



Contents

Pattern
Instructions



You will need:

Printer * Print at 100% A4
Your finished embroidered panel
Outer self backing fabric (30x30cm/
12x12Inch) *Inc. in main kit
Lining fabric (30x40cm/12x16Inch)
Buttons of your choice
Sewing needle, Sewing thread
Sewing machine (optional)



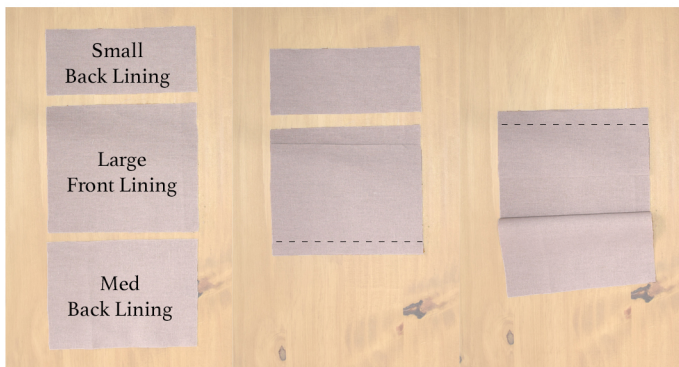
Instructions

Note: All Seam Allowances are 1cm/0.39Inches. The fabrics do not have a right/wrong side, “right and wrong side” are used for construction purposes. You can stitch by hand or machine.

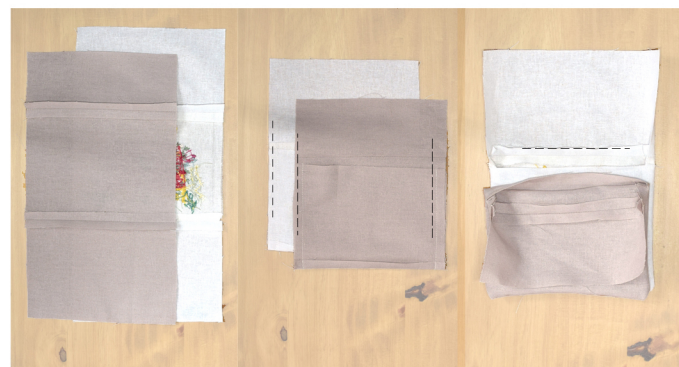


1. Cut out the Self panels (the Large Front Self is for your Embroidered panel)

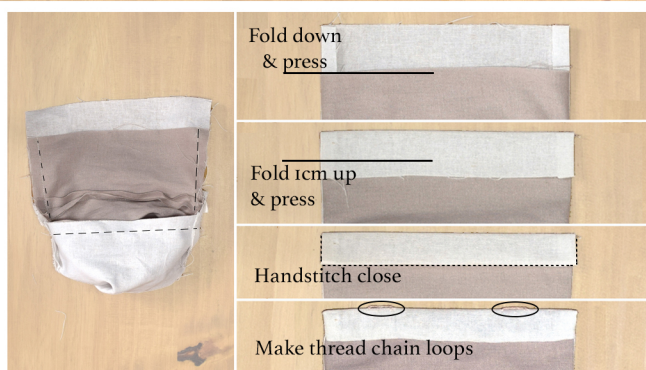
Place the Med Back Self panel right sides together with the Emb. panel and stitch along the base, press open. Attach the Small Back Self panel and stitch to the emb. piece along the top.



2. Repeat step 1 with the lining.



3. Right sides together, fold the Med Back Self up and stitch the sides closed (adding the label into the seam before hand) Repeat this for the lining. Turn both self & lining right sides out. Right sides together, bag-out the purse opening on 3 sides. Snip into the corners to release any bulk when turning through.



4. Push the lining into the purse, and press flat. Fold down the Small Back Self at the top using the lining raw edge as your guide. Press flat. Turn under by 1cm. Hand-stitch close the 3 sides. Using a thread chain loop - make your button loops along the edge (use leftover emb. thread, col of your choice).

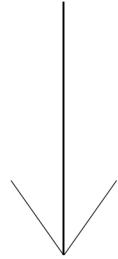


5. Using the thread loops as your guide mark your button placement & stitch your button in place. Optional: You can use poppers, or create traditional button holes instead of loops.

1cm / 0.39Inch SA

Fold Line

Small Purse



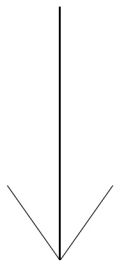
SMALL BACK SELF

CUT 1 Self

©Alison Lai
For Personal use only
www.lochlinstitches.com

1cm / 0.39Inch SA

Small Purse



LARGE FRONT

CUT 1 Self
CUT 1 Lining

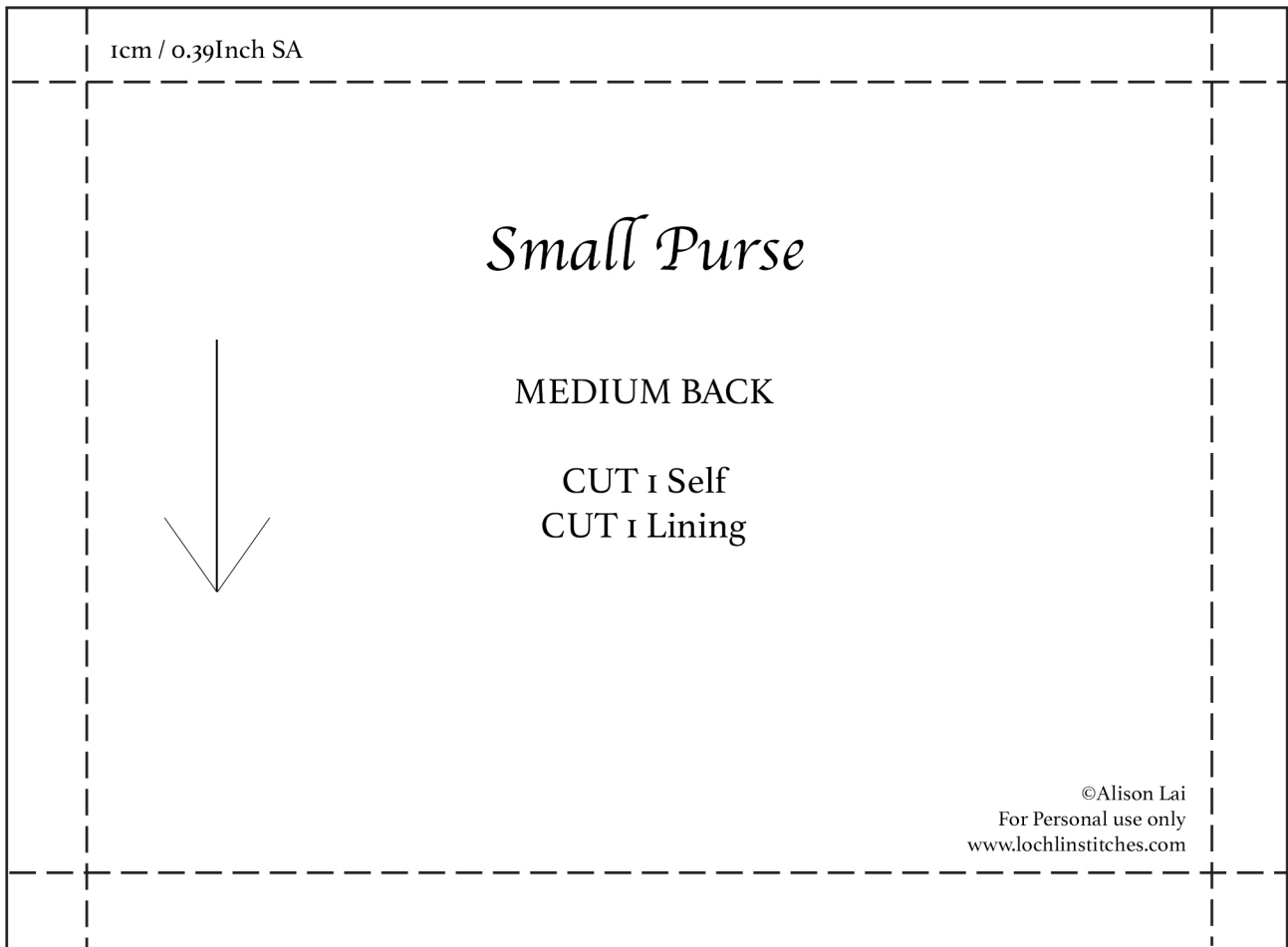
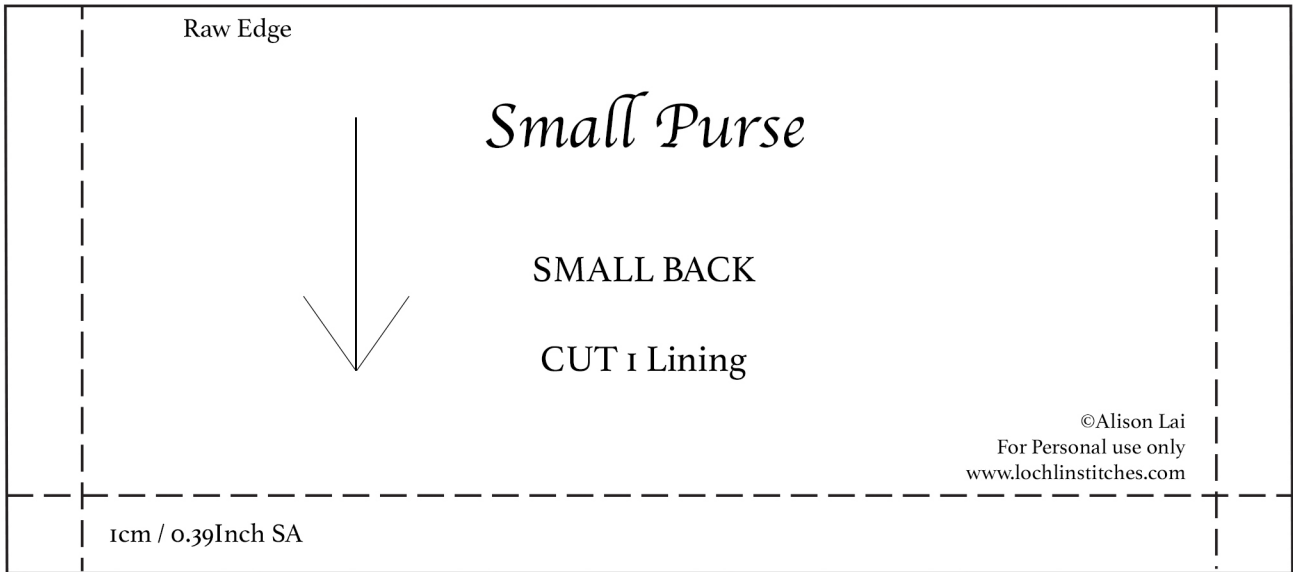
1 cm



1 Inch



©Alison Lai
For Personal use only
www.lochlinstitches.com



1 cm



1 Inch

